

CM INDUSTRIES **INC.**

TWC #2, #3, #4 & #5

Semi-Automatic, Air-Cooled, MIG Welding Gun



PARTS LIST

MADE IN USA

CM Industries, Inc.
505 Oakwood Rd. Lake Zurich, IL 60047

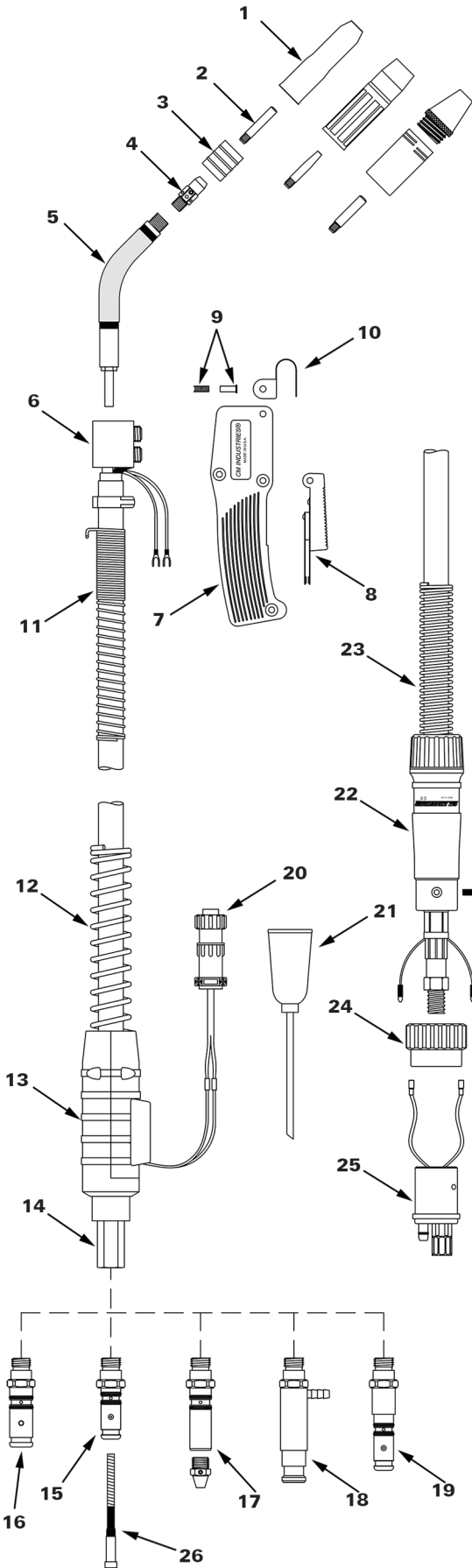
ph: 847-550-0033 fx: 847-550-0444

email: sales@cmindustries.com

www.cmindustries.com

September 2021 v2.1

PARTS LIST - Replacement Parts for TWC 200/250, 300, 400 & 500 Amps



ITEM #	PART #				DESCRIPTION
	200/250	300	400	500	
1	C22-50	C24A-62		C25CT-62	Nozzle
	See Nozzle Selection				Nozzles, Optional Available
2	See Contact Tip Selection				Contact Tip
3	C32	C34A		N/A	Insulator
4	C52	C54A		C55SW	Diffuser, std.
	C52FN	N/A		N/A	Diffuser, for Fixed Nozzle
	N/A		C55		Diffuser, for 5/64"
	N/A		C55H		Diffuser, for 3/32" - 7/64"
5	C62J-60 (200A) C62J-60HD (250A)	C63J-60	C64J-60	C65J-60	Neck - 60° std.
	C62J-45 (200A) C62J-45HD (250A)	C63J-45	C64J-45	C65J-45	Neck - 45°
6	C102		C104		Cable Connector Block
7	C83		C84A	C85	Handle Kit
8	C92			C94R	Trigger Assembly
9	C122FM			C124FM	Binder Post & Screw
10	C152			C154	Hanger
11	C142-6S		C144-6S	C145-6S	Front Cable Support Spring
12	C350R-230-10S				Rear Cable Support Spring
13	CM6RC				Connector Case
14	N/A	CM170-4H		CM170-5H	Power Pin Adaptor
15	C350-174H			N/A	Power Pin, Tweco® #4
16	N/A			C176S-H	Power Pin, Tweco® #5
17	C350-174MH C174M-N		CEL176-MH C175M-N		Power Pin, Miller® Power Pin Cap
18	C350-174LH			CEL176-LH	Power Pin, Lincoln® LN
19	C350-174LPMH			N/A	Power Pin, Lincoln® PM & LF
20	300-05-001				Control Plug, Miller® / Lincoln® PM
21	300-05-002				Control Plug, Lincoln® LN & LF
22	2520100				Adaptor Support, Euro
23	185-26-001		185-40-001		Adaptor Support Spring
24	C174X-2				Euro Connector Nut
25	C174EX-1				Euro Connector Plug*
26	See Liner Selection				Liner



Scan this QR Code to take you directly to the Technical Info page of cmindustries.com

Consumable Selection

Nozzles (Optional Available)

Slip-On



200 Amp	
C22-37	3/8" I.D. Adjustable
C22-50	1/2" I.D. Adjustable, Std.
C22-62	5/8" I.D. Adjustable
C22-37-SS	3/8" I.D. Short Stop
C22-50-SS	1/2" I.D. Short Stop
C22-62-SS	5/8" I.D. Short Stop
C22T-37-SS	Tapered, 3/8" I.D. Short Stop
300 & 400 Amp	
C24A-50	1/2" I.D. Adjustable
C24A-62	5/8" I.D. Adjustable, Std.
C24A-75	3/4" I.D. Adjustable
C24A-37-SS	3/8" I.D. Short Stop
C24A-50-SS	1/2" I.D. Short Stop
C24A-62-SS	5/8" I.D. Short Stop
C24A-75-SS	3/4" I.D. Short Stop
C24AT-37-SS	Tapered, 3/8" I.D. Short Stop

Thread-On, Self Insulated



200, 300 & 400 Amp	
C23-37	3/8" I.D.
C23-50	1/2" I.D.
C23-62	5/8" I.D.
C23-75	5/8" I.D.
C23T-37	Tapered, 3/8" I.D.

Heavy Duty - 2 Piece



200, 300 & 400 Amp	
C24CT-37-S	3/8" I.D.
C24CT-50-S	1/2" I.D.
C24CT-62-S	5/8" I.D.
C24CT-75-S	3/4" I.D.
C34CT	Insulator
500 Amp	
C25CT-50	1/2" I.D.
C25CT-62	5/8" I.D.
C25CT-75	3/4" I.D.
C35CT	Insulator

Contact Tips

14 Series



C14-30	.030" 0.8mm
C14-35	.035" 0.9mm
C14-40	.040" 1.0mm
C14-45	.045" 1.2mm
C14-52	.052" 1.4mm
C14-116	1/16" 1.6mm
C14A-364	Aluminum, 3/64"

14T Series



C14T-30	Tapered, .030" 0.8mm
C14T-35	Tapered, .035" 0.9mm
C14T-40	Tapered, .040" 1.0mm
C14T-45	Tapered, .045" 1.2mm
C14T-52	Tapered, .052" 1.4mm
C14T-116	Tapered, 1/16" 1.6mm

14H Series



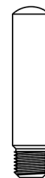
C14H-35	H.D., .035" 0.9mm
C14H-40	H.D., .040" 1.0mm
C14H-45	H.D., .045" 1.2mm
C14H-52	H.D., .052" 1.4mm
C14H-116	H.D., 1/16" 1.6mm
C14AH-364	H.D., Aluminum, 3/64"
C14AH-116	H.D., Aluminum, 1/16"

15H Series



C15H-35	H.D., .035" 0.9mm
C15H-40	H.D., .040" 1.0mm
C15H-45	H.D., .045" 1.2mm
C15H-52	H.D., .052" 1.4mm
C15H-116	H.D., 1/16" 1.6mm
C15H-564	H.D., 5/64" 2.0mm
C15H-332	H.D., 3/32" 2.4mm
C15H-764	H.D., 7/64" 2.8mm
C15AH-364	H.D., Aluminum, 3/64"
C15AH-116	H.D., Aluminum, 1/16"

15HFC Series



C15HFC-35	H.D., .035" 0.9mm
C15HFC-40	H.D., .040" 1.0mm
C15HFC-45	H.D., .045" 1.2mm
C15HFC-52	H.D., .052" 1.4mm
C15HFC-116	H.D., 1/16" 1.6mm
C15HFC-564	H.D., 5/64" 2.0mm
C15HFC-332	H.D., 3/32" 2.4mm
C15HFC-764	H.D., 7/64" 2.8mm

Liners

200 Amp

C42-23-15	15', .023"
C42-3035-15	15', .030"-.035"
C42-3035-25	25', .030"-.035"
C42-4045-15	15', .040"-.045"
C42-4045-25	25', .040"-.045"
C42N-3545-15	Nylon 15', .035"-.045"

300 & 400 Amp

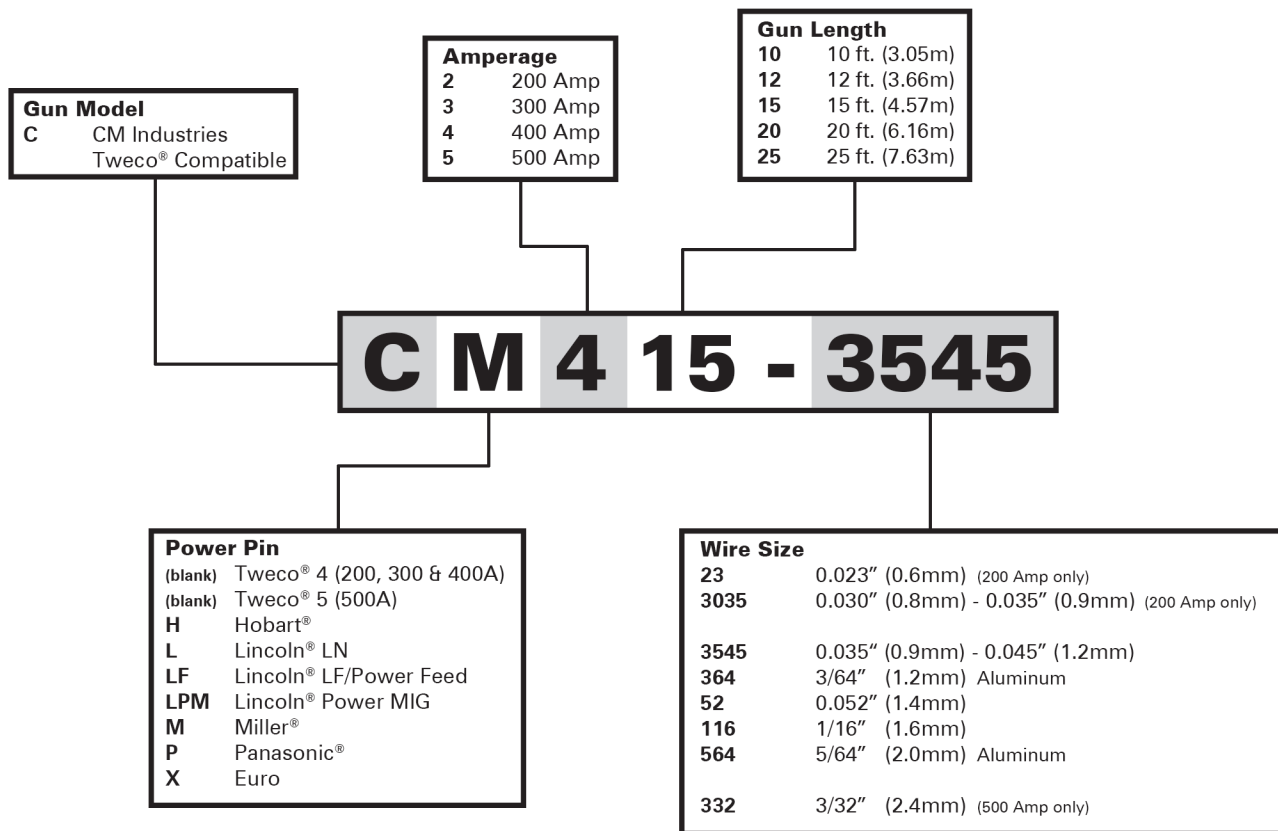
C44-3545-15	15', .035"-.045"
C44-3545-25	25', .035"-.045"
C44-116-15	15', .062"
C44-116-25	25', .062"
C44-564-15	15', 5/64"
C44-564-25	25', 5/64"
C44N-3545-15	Nylon 15', .035"-.045"
C44N-116-15	Nylon 15', .062"

* Euro Connectors only accept
44 Series Liners

500 Amp Only


C45-3545-15	15' .035"-.045"
C45-3545-25	25' .035"-.045"
C45-116-15	15' .062"
C45-116-25	25' .062"
C45-564-15	15' 5/64"
C45-564-25	25' 5/64"
C45H-332-15	15' 3/32"
C45H-332-25	25' 3/32"
C45H-764-15	15' 7/64"
C45H-764-25	25' 7/64"
C45N-3545-15	15' .035"-.045"
C45N-116-15	15' 3/64"-.062"
C45SN-116-15	Steel/Nylon 15' .062"
C45TF-116-15	Teflon 15' 3/64"-.062"


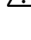
Ordering Information



Example of 250 Amp Part#: CM250-3545-15 TWC 250 Amp 15' w/ Miller DP

SAFETY WARNINGS! READ BEFORE USE

 The symbols shown below are used throughout this manual to call attention to and identify possible hazards. When you see the symbol, watch out, and follow the related instructions to avoid the hazard. The safety information given below is only a summary of the more complete safety information found in the welding power source Owner's Manual.

 Read and follow all Safety Standards.
 Only qualified persons should install, operate, maintain, and repair this equipment. A qualified person is defined as one who, by possession of a recognized degree, certificate, or professional standing, or who by extensive knowledge, training and experience, has successfully demonstrated ability to solve or resolve problems relating to the subject matter, the work, or the project and has received safety training to recognize and avoid the hazards involved.

 During operation, keep everybody, especially children, away.

ELECTRIC SHOCK can kill.

- Always wear dry insulating gloves.
- Insulate yourself from work and ground.
- Do not touch live electrode or electrical parts.
- Replace worn, damaged, or cracked guns or cables.
- Turn off welding power source before changing contact tip or gun parts.
- Keep all covers and handle securely in place.

FUMES AND GASES can be hazardous.

- Keep your head out of the fumes.
- Ventilate area, or use breathing device. The recommended way to determine adequate ventilation is to sample for the composition and quantity of fumes and gases to which personnel are exposed.
- Read and understand the Safety Data Sheets (SDSs) and the manufacturer's instructions for adhesives, coatings, cleaners, consumables, coolants, degreasers, fluxes, and metals.

WELDING can cause fire or explosion.

- Do not weld near flammable material.
- Do not weld on containers that have held combustibles, or on closed containers such as tanks, drums, or pipes unless they are properly prepared according to AWS F4.1 and AWS A6.0 (see Safety Standards).
- Watch for fire; keep extinguisher nearby.
- Read and understand the Safety Data Sheets (SDSs) and the manufacturer's instructions for adhesives, coatings, cleaners, consumables, coolants, degreasers, fluxes, and metals.

HOT PARTS can burn.

- Allow gun to cool before touching.
- Do not touch hot metal.
- Protect hot metal from contact by others.



MOVING PARTS can injure.

- Keep away from moving parts.
- Keep away from pinch points such as drive rolls.



ARC RAYS can burn eyes and skin.

- Arc rays from the welding process produce intense visible and invisible (ultraviolet and infrared) rays that can burn eyes and skin. Sparks fly off from the weld.
- Wear an approved welding helmet fitted with a proper shade of filter lenses to protect your face and eyes from arc rays and sparks when welding or watching (see ANSI Z49.1 and Z87.1 listed in Safety Standards).
 - Wear approved safety glasses with side shields under your helmet.
 - Use protective screens or barriers to protect others from flash, glare and sparks; warn others not to watch the arc.
 - Wear body protection made from durable, flame-resistant material (leather, heavy cotton, wool). Body protection includes oil-free clothing such as leather gloves, heavy shirt, cuffless trousers, high shoes, and a cap.



BUILDUP OF GAS can injure or kill.

- Shut off compressed gas supply when not in use.
- Always ventilate confined spaces or use approved air-supplied respirator.



NOISE can damage hearing.

- Noise from some processes or equipment can damage hearing.
- Check for noise level limits exceeding those specified by OSHA.
 - Use approved ear plugs or ear muffs if noise level is high.
 - Warn others nearby about noise hazard.



WELDING WIRE can injure.

- Keep hands and body away from gun tip when trigger is pressed.



READ INSTRUCTIONS.

- Read and follow all labels and the Owner's Manual carefully before installing, operating, or servicing unit.
- Read the safety information at the beginning of the manual and in each section.
- Use only genuine replacement parts from the manufacturer.
- Perform installation, maintenance, and service according to the Owner's Manuals, industry standards, and national, state, and local codes.

CALIFORNIA PROPOSITION 65 WARNING

This product contains chemicals, including lead, known to the State of California to cause cancer, birth defects, or other reproductive harm. *Wash hands after use.*
 (California Health & Safety Code Section 25249.5)